

## In case of fire

Keep calm !

### Alert fire

### Emergency call 112

- *Where is the fire?*
- *What is on fire?*
- *How much is on fire?*
- *What dangers?*
- *Wait for queries!*

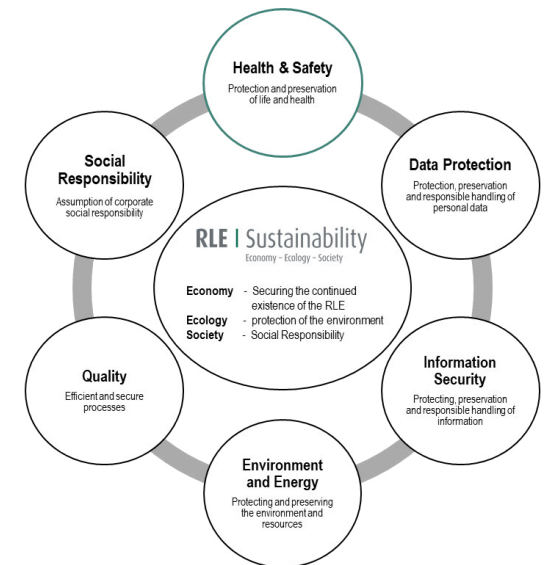
### Get into safety

- *Warn people who are in danger/ activate Alarm*
- *Take along derelicts*
- *Close doors*
- *Use marked ways of escape*
- *Do not use elevators*
- *Find collection point*
- *Pay attention at instructions*



## Health & Safety by RLE

IMS - Integrated Management System



Engineering Excellence. Worldwide.

## IMS - Integrated Management System



Energy  
Quality  
Environment

Health & Safety  
Data Protection  
Information Security

[ims@rle.de](mailto:ims@rle.de)

## Health & Safety

*Our primary task in occupational safety is to protect and maintain the life and health of people at our site.*

*Together, we do our utmost to ensure safe and healthy working conditions in our company.*

*The effectiveness of the occupational health and safety standards is regularly reviewed in order to initiate measures for improvement.*

*We inform openly about all topics relevant to occupational safety and promote occupational safety knowledge and safety awareness.*

*Your cooperation is necessary in order to achieve the common goal.*

*The central information platform:*

***IMS.RLE.DE / Health & Safety***

*If you have any questions please contact us.*

*[Arbeitsschutz@rle.de](mailto:Arbeitsschutz@rle.de)*

## General Safety Instructions

*Inform yourself beforehand about the established rules of conduct in case of danger (e.g. notices - authorised persons in case of danger, escape and rescue routes, assembly points).*

*When entering and during the stay/work in our premises and operating rooms, you undertake to observe all relevant work safety regulations.*

*Depending on the working environment and activity, personal protective equipment must be used.*

*Smoking is generally prohibited in buildings.*

*Smoking is only allowed outside the buildings in are allowed in the marked areas.*

*Ashtray contents may only be collected in self-closing metal buckets or self-extinguishing ashtrays.*

*The consumption of alcohol or other intoxicating substances is prohibited.*

## Fire Prevention

*All are obliged to take great care to avoid the occurrence of fires and other damage.*

## Environmental Protection

*Environmental protection is a fundamental task of all and therefore everyone should participate equally responsibly in the daily implementation of environmental protection.*

## Staying and working in our premises

*When staying and carrying out work at our premises, you undertake to comply with the stipulated occupational health and safety regulations.*

*We therefore ask you to familiarize yourself with the present occupational health and safety regulations.*

*Please address your respective contact person.*